

# P-Selectin/CD62P

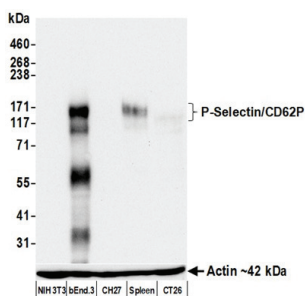
**Product Number:** A700-268  
**Reactivity:** Human, Mouse  
**Validated Applications:** Flow Cyt, ICC, IHC, IP, WB, mIF  
**Full Name:** P-Selectin  
**Gene ID:** 20344

**Uniprot ID:** Q01102  
**Alternative Names:** CD62 antigen-like family member P, GMP-140, granule membrane protein 140 (GMP-140), Leukocyte-endothelial cell adhesion molecule 3 (LECAM3), platelet activation dependent granule-external membrane protein (PADGEM)

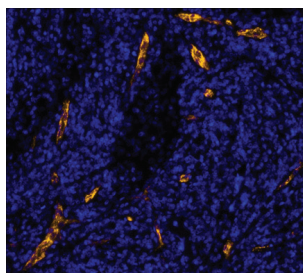
## Background Information

P-selectin, a 140 kDa transmembrane glycoprotein, is a member of the selectin family along with E-selectin and L-selectin. Selectins are a part of the C-type lectin family of carbohydrate-binding proteins. P-selectin is present on activated platelets and endothelial cells and binds to P-selectin glycoprotein ligand-1 (PSGL-1) and CD24 on myeloid cells. This binding is rapid and reversible, making it optimal for tethering flowing cells within the vasculature to the endothelium. P-selectin binding generates inflammatory signals at sites of vascular injury, which promotes the extravasation of leukocytes. Alterations in the expression of P-selectin and thus platelet activity have been shown to be driving forces in atherosclerosis, stroke, diabetes, and cancer metastasis.<sup>1-3</sup>

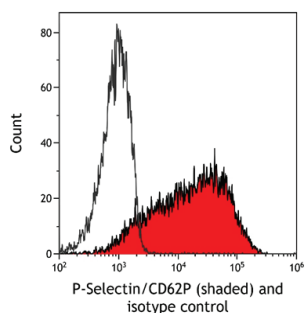
## Featured Applications



**Detection of mouse P-Selectin/CD62P by western blot.**  
 Antibody: A700-268 used at 1:1000.



**Detection of human P-Selectin/CD62P (orange) by immunofluorescence.** Sample: FFPE section of metastatic lymph node. Antibody: A700-268 used at 1:100. Counterstain: DAPI (blue).



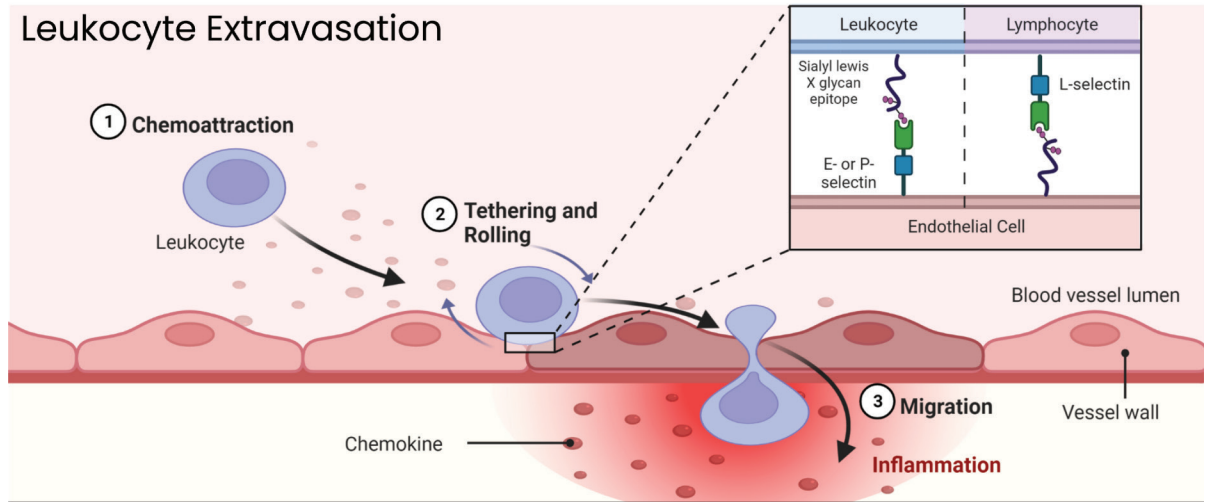
**Detection of mouse P-Selectin/CD62P (shaded) in b.END3 cells by flow cytometry.** Antibody: A700-268 used at 1µL per 10<sup>6</sup> cells.

**References:**

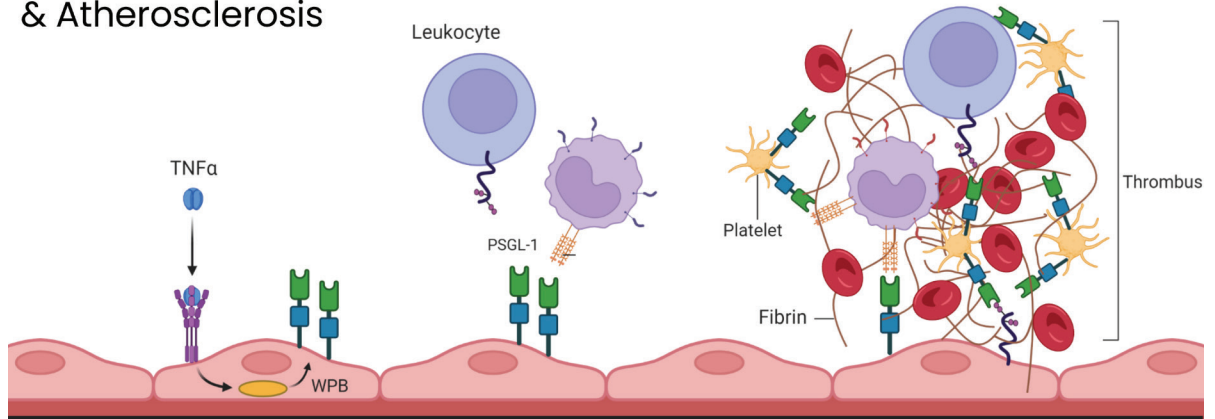
- Blann A. The adhesion molecule P-selectin and cardiovascular disease. *Eur Heart J.* 2003;24(24):2166-2179. doi:10.1016/j.ehj.2003.08.021
- Kappelmayr J, Nagy B, Miszti-Blasius K, Hevessy Z, Setiadi H. The emerging value of P-selectin as a disease marker. *Clinical Chemistry and Laboratory Medicine (CCLM).* 2004;42(5). doi:10.1515/CCLM.2004.082
- Batesman A, Martin MJ, Orchard S, et al. UniProt: the Universal Protein Knowledgebase in 2023. *Nucleic Acids Res.* 2023;51(D1):D523-D531. doi:10.1093/nar/gkac1052

## Selectins: Function & Pathology

### Leukocyte Extravasation



### Thrombus Formation & Atherosclerosis



### Cancer & Metastasis

